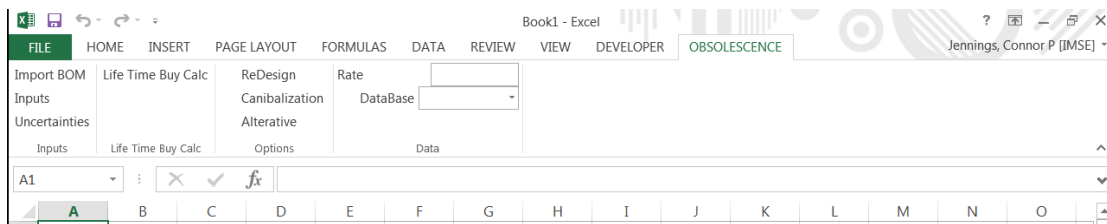




# Obsolescence Tool Add-in Installation Guide

Version 0.3.01

Developed at Iowa State University



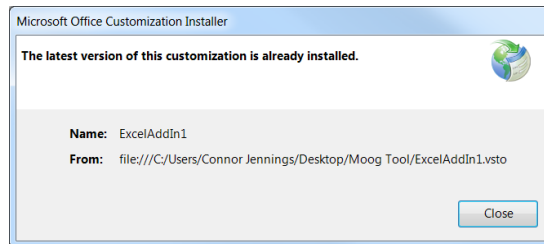
By Connor Jennings, Pratek Pingle, and Janis Terpenny

3/10/15

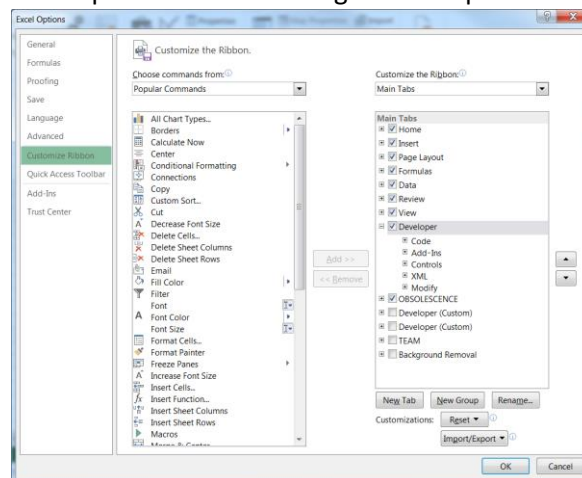
**NOT FOR DISTRIPUTION**

## Installation of Center for E-Design Obsolescence Tool

1. Unzip folder and click the setup file.
2. In the new window, click next to install the software.
3. If the latest version is already installed the following window will appear.



4. After getting conformation the software is installed, open Excel.
5. If the OBSOLESCENCE tab does not appear in the tab ribbon:
  - a. If not Developer Tab in Ribbon.
    - i. Click on the file tab and then the option button.
    - ii. In the new window, click the customize ribbon tab and the check the box next to developer. In the bottom right corner press OK.



- b. Now click on the Developer tab in the ribbon.
  - i. Locate the COM Add-Ins button in the ribbon and click it.
  - ii. Find ExcelAddIn1 in the list of Add-Ins and check the box and press OK.

